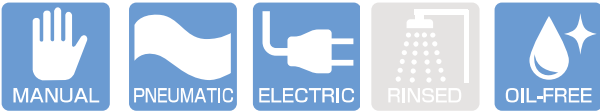


JIS ANSI/ASME/ASTM DIN/ISO



6 Colors Handle for Easy Maintenance

Operating Temperature(°C)

PVC	0 ~ 50	PP	- 20 ~ 80
HT·CPVC	0 ~ 90	PVDF	- 20 ~ 100

ESLON BALL VALVE

Feature

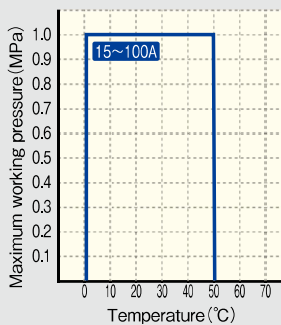
- Left hand screw on ball holder prevents screw loose and ensures perfect sealing of the valve when union nut is loosened.
- Full port in all sizes ensures no pressure loss at valve full opened position.
- Keep water quality by little obstructed design in flow path.
- Six colors of handle for sizes 15~50A enable easier management of application and fluid classification.

⚠ Important Notes

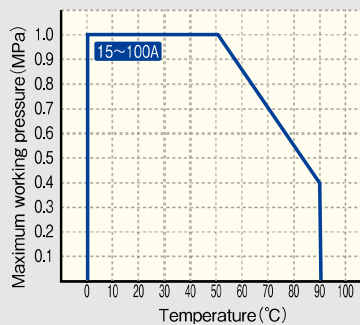
- Gasifying, volatile, or evaporating fluid such as hydrogen peroxide and sodium hypochlorite might rise inner pressure of valve and burst the valve. Please contact us concerning such risk. Gas relief type of customized ball valve which has relief orifice on the ball is available.
- Do not use for the fluid containing slurry, solid, sediment, or crystallized fluid. Or for those kinds of fluid, strainer should be used in upstream.

Maximum Working Pressure - Temperature Rating

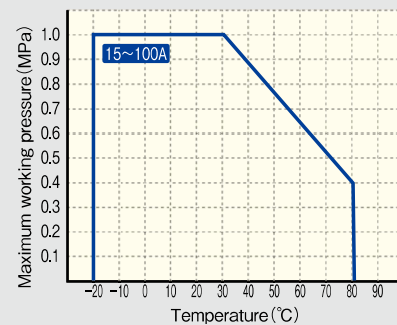
Body material : PVC



Body material : HT · CPVC



Body material : PP



Body material : PVDF

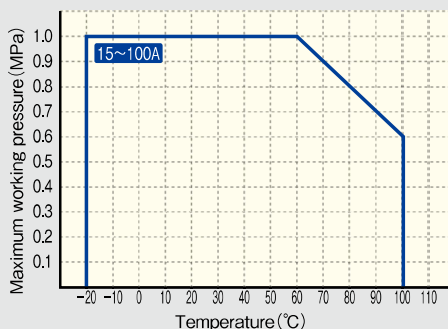
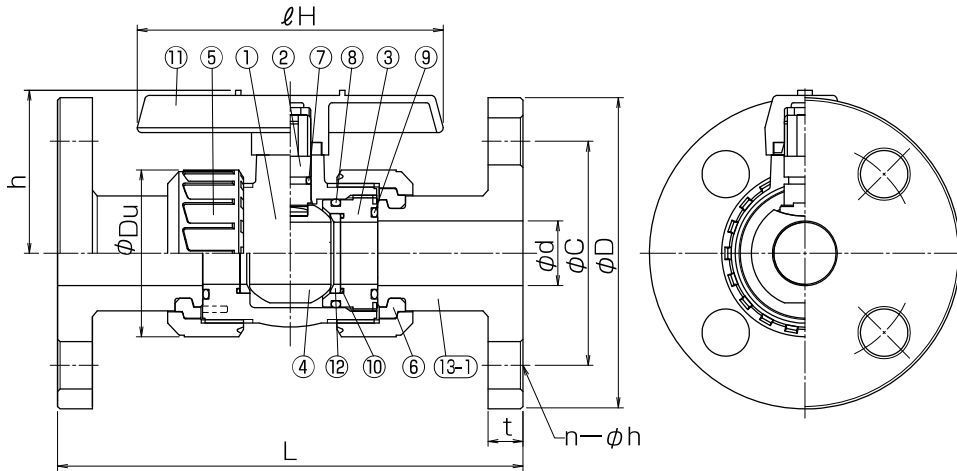
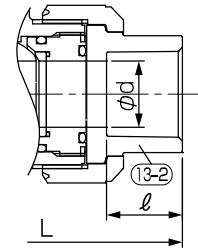


Figure (Flange Type · Socket Type · Thread Type · Butt Type)

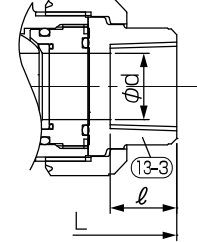
● Flange Type



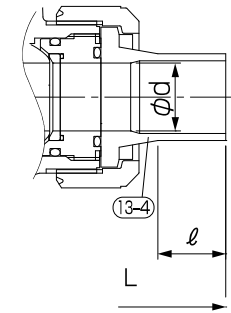
● Socket Type (PVC, HT, CPVC, PP)



● Thread Type (PVC, PVDF)



● Butt Type (PP, PVDF, PE)



Parts List

No.	Part Name	Q'TY	Material/Color	No.	Part Name	Q'TY	Material/Color
1	Body	1	● PVC	13-1	Flange	2	● HT (JIS:Brown)
2	Stem	1	● CPVC				● PP
3	Ball holder	*1	(ANSI·DIN:Gray)	13-2	TS Socket	2	● PVC
4	Ball	1	● PP ● PVDF				● HT
5	Union nut	2		13-3	Threaded	2	● CPVC
6	Set ring	2					● PVC ● PVDF
7	Stem O-ring	*2		13-4	Butt Spigot Type	2	● PP ● PVDF
8	Ball holder O-ring	*3	● EPDM				● PE
9	Union O-ring	2	● FKM	13-5	Socket welding	2	PP
10	Ball seat O-ring	2					
11	Handle	1	ABS				
12	Ball Seat	2	PTFE				

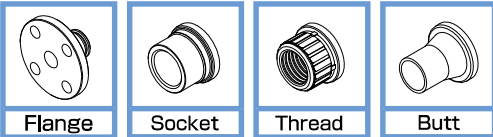
*1 15"50A:1, 65"100A:2 *2 15"32A:1, 40"100A:2 *3 15"50A:1, 65"100A:2

Size

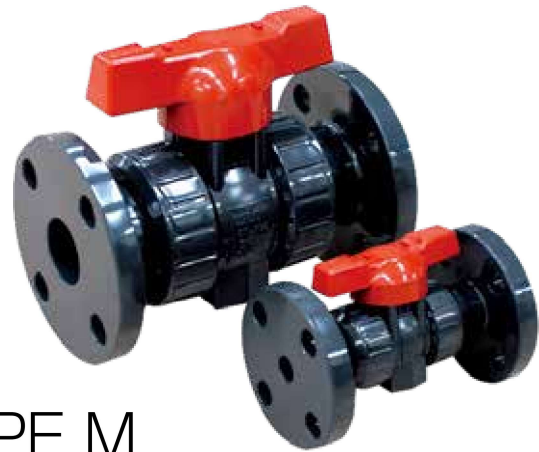
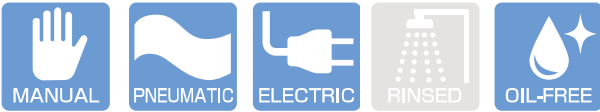
Size		phi d	h	lH	phi Du	Flange													
A	B					L			JIS10K			ANSI				DIN			
						PVC,HT,CPVC	PP,PVDF	phi D	phi C	n-phi h	t	phi D	phi C	n-phi h	t	phi D	phi C	n-phi h	t
15	1/2	15	50	95	49	143		95	70	4-15	14	89	60.5	4-16	11.5	95	65	4-14	11
20	3/4	20	53	95	59	172		100	75	4-15	14	98	70.0	4-16	13.0	105	75	4-14	12
25	1	25	66	123	67	187		125	90	4-19	14	108	79.5	4-16	14.5	115	85	4-14	14
32	1 1/4	32	74	123	81	190		135	100	4-19	16	117.5	89.0	4-16	16.0	140	100	4-18	15
40	1 1/2	40	100	152	98	212		140	105	4-19	16	127	98.5	4-16	17.5	150	110	4-18	16
50	2	50	107	152	120	234		155	120	4-19	20	152	120.5	4-19	19.5	165	125	4-18	18
65	2 1/2	65	146	188	150	259	257	175	140	4-19	22	178	139.5	4-20	22.5	185	145	4-18	22
80	3	80	169	230	186	304	301	185	150	8-19	22	191	152.5	4-20	24.0	200	160	8-18	23
100	4	100	203	283	228	372	367	210	175	8-19	24	229	190.5	8-20	24.0	220	180	8-18	23

Size		Socket						Thread											
A	B	JIS		ASTM		DIN		JIS,DIN(Rc)				ANSI(NPT)				DIN(Rp)			
		PVC,HT,CPVC						PVC		PVDF		PVC		PVDF		PVC		PVDF	
		L	l	L	l	L	l	L	l	L	l	L	l	L	l	L	l	L	l
15	1/2	109	22	103	22.22	92	16	97	18	99	20	97	18	99	99	97	18	99	99
20	3/4	132	25	119	25.4	107	19	117	18	116	22	117	18	116	116	117	18	116	116
25	1	143	29	133	28.58	121	22	128	23	136	24	128	23	136	136	128	23	136	136
32	1 1/4	166	32	147	31.75	137	26	146	23	148	25	146	23	148	148	146	23	148	148
40	1 1/2	175	35	171	34.93	161	31	163	25	169	28	163	25	169	169	163	25	169	169
50	2	203	38	188	38.1	189	38	188	30	196	30	188	30	196	196	188	30	196	196
65	2 1/2	259	61	211	44.45	211	44	227	32	227	32	212	32	212	227	212	32	212	227
80	3	311	64	262	47.63	263	51	278	37	278	37	261	37	261	278	261	37	261	278
100	4	390	84	315	57.15	315	61	330	45	330	45	315	45	315	330	315	45	315	330

Size		Butt Spigot				Socket welding		Weight(kg/unit)									
A	B	DIN		DIN		DIN		Flange				Socket		Thread		Spigot	
		PP,PVDF		PE		PP		PVC	HT,CPVC	PP	PVDF	PVC	HT,CPVC	PVC	PVDF	PVDF	
		L	l	L	l	L	l										
15	1/2	143	30	210	65	103	12.0	0.4	0.4	0.3	0.5	0.2	0.2	0.2	0.2	0.2	
20	3/4	152	24	220	65	114	13.0	0.6	0.6	0.4	0.7	0.3	0.3	0.3	0.3	0.3	
25	1	161	24	237	70	126	14.5	0.9	0.9	0.5	1.0	0.4	0.4	0.4	0.5	0.5	
32	1 1/4	167	25	258	75	141	18.0	1.2	1.2	0.7	1.3	0.6	0.6	0.6	0.6	0.6	
40	1 1/2	190	24	292	80	162	16.0	1.7	1.7	1.1	1.9	1.1	1.1	1.1	1.2	1.2	
50	2	216	28	325	90	185	20.0	2.6	2.6	1.6	3.0	1.6	1.7	1.6	1.9	1.9	
65	2 1/2	208	23	363	100	204	21.0	4.2	4.3	2.8	5.0	3.0	3.3	3.0	3.6	3.6	
80	3	301	45	424	105	264	26.5	6.7	6.9	4.4	8.2	5.6	6.1	5.6	7.0	7.0	
100	4	340	43	478	110	317	31.5	11.5	11.9	7.4	14.1	10.5	11.2	10.5	12.5	12.5	



JIS ANSI/ASME/ASTM DIN/ISO



Operating Temperature(°C)

PVC	0 ~ 50	PP	- 20 ~ 80
HT-CPVC	0 ~ 90	PVDF	- 20 ~ 100

ESLON BALL VALVE TYPE M

Feature

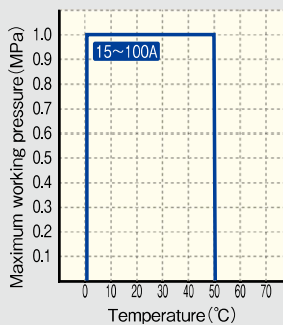
- Left hand screw on ball holder prevents screw loose and ensures perfect sealing of the valve when union nut is loosened.
- Full port in all size. No pressure loss at full opened position by nominal size of inner diameter.
- Keep water quality by little obstructed design in flow path. Compared with the conventional type (non-mount type), light-weight & compactness.
- It's possible to install an actuator on to the valve body directly.

⚠ Important Notes

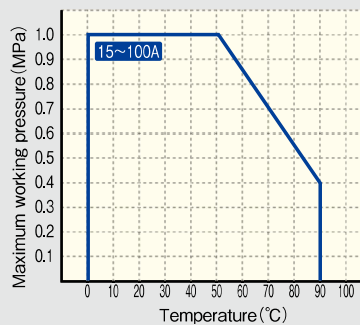
- Gasifying, volatile, or evaporating fluid such as hydrogen peroxide and sodium hypochlorite might rise inner pressure of valve and burst the valve. Please contact us concerning such risk. Gas relief type of customized ball valve which has relief orifice on the ball is available.
- Do not use for the fluid containing slurry, solid, sediment, or crystallized fluid. Or for those kinds of fluid, strainer should be used in upstream.

Maximum Working Pressure - Temperature Rating

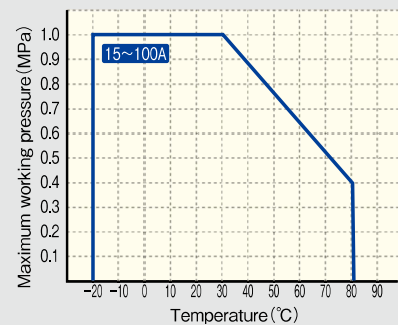
Body material : PVC



Body material : HT · CPVC



Body material : PP



Body material : PVDF

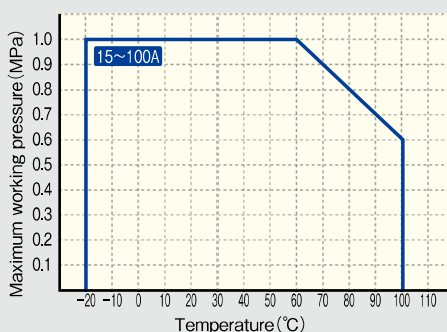
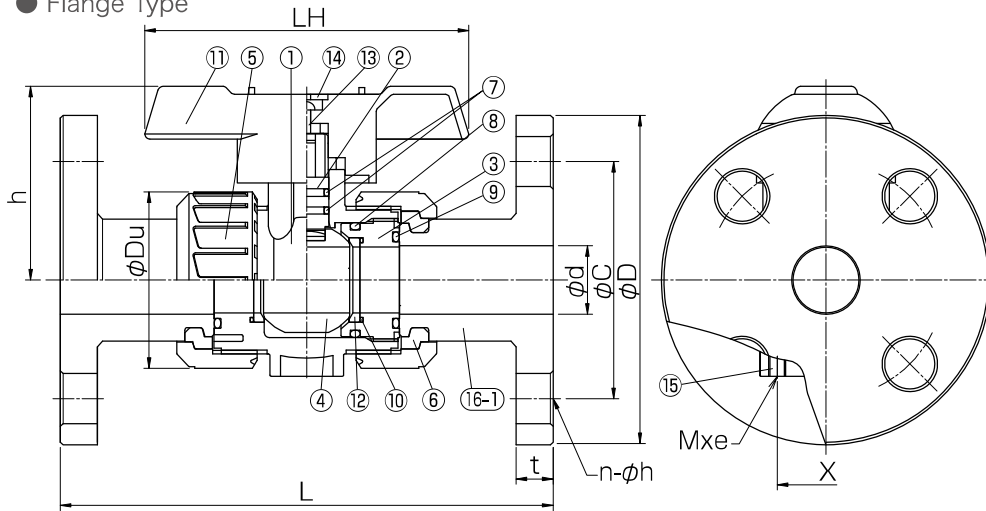
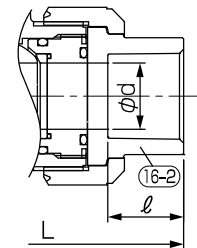


Figure (Flange Type · Socket Type · Thread Type · Butt Type)

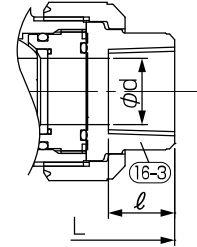
● Flange Type



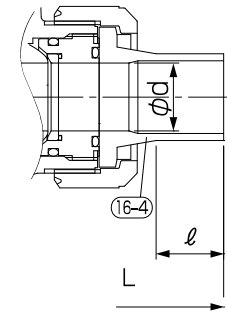
● Socket Type (PVC, HT, CPVC, PP)



● Thread Type (PVC, PVDF)



● Butt Type (PVDF)



Parts List

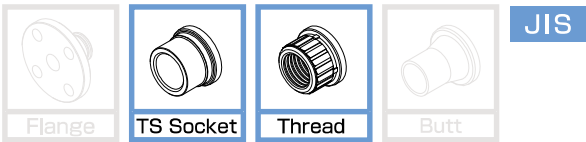
No.	Part Name	Q'TY	Material/Color	No.	Part Name	Q'TY	Material/Color
1	Body	1	● PVC	14	Handle Cap	1	ABS
2	Stem	1	● HT (JIS:Brown)	15	Insert Nut	2	C3604
3	Ball holder	1	● CPVC	16-1	Flange	2	● PVC ● HT ● CPVC ● PP ● PVDF
4	Ball	1	(ANSI-DIN:Gray)				
5	Union nut	2	● PP ● PVDF	16-2	TS Socket	2	● PVC ● HT ● CPVC
6	Set ring	2					
7	Stem O-ring	2		16-3	Threaded	2	● PVC ● PVDF ● PP ● PVDF
8	Ball holder O-ring	1	● EPDM				
9	Union O-ring	2	● FKM	16-4	Butt Spigot Type	2	● PE
10	Ball seat O-ring	2					
11	Handle	1	ABS				
12	Ball Seat	2	PTFE				
13	Screw	1	SUS304				

Size

Size		FIXING Insert Nut					Flange																		
A	B	φd	h	LH	φDu	X	Mxe	PVC,HT			PP,PVDF			JIS10K			ANSI			DIN					
								φD	φC	n-φh	t	φD	φC	n-φh	t	φD	φC	n-φh	t	φD	φC	n-φh	t		
15	1/2	15	53	95	49	27	M5x8	143	95	70	4-15	14	89	60.5	4-16	11.5	95	65	4-14	11					
20	3/4	20	62	95	59	32	M5x8	172	100	75	4-15	14	98	70.0	4-16	13.0	105	75	4-14	12					
25	1	25	76	123	67	37	M5x8	187	125	90	4-19	14	108	79.5	4-16	14.5	115	85	4-14	14					
32	1 1/4	32	84	123	81	42	M5x8	190	135	100	4-19	16	117.5	89.0	4-16	16.0	140	100	4-18	15					
40	1 1/2	40	114	158	98	57	M6x10	212	140	105	4-19	16	127	98.5	4-16	17.5	150	110	4-18	16					
50	2	50	120	158	120	67	M6x10	234	155	120	4-19	20	152	120.5	4-19	19.5	165	125	4-18	18					
65	2 1/2	65	153	211	150	81	M6x10	259	257	175	140	4-19	22	178	139.5	4-20	22.5	185	145	4-18	22				
80	3	80	171	240	186	99.7	M8x10	304	301	185	150	8-19	22	191	152.5	4-20	24.0	200	160	8-18	23				
100	4	100	202	290	228	119.7	M8x10	372	367	210	175	8-19	24	229	190.5	8-20	24.0	220	180	8-18	23				

Size		Socket						Thread											
A	B	JIS		ASTM		DIN		JIS,DIN(Rc)				ANSI(NPT)				DIN(Rp)			
		PVC,HT,CPVC						PVC		PVDF		PVC		PVDF		PVC		PVDF	
		L	ℓ	L	ℓ	L	ℓ	L	ℓ	L	ℓ	L	ℓ	L	ℓ	L	ℓ	L	ℓ
15	1/2	109	22	103	22.22	92	16	97	18	99	20	97	18	99	99	97	18	99	99
20	3/4	132	25	119	25.4	107	19	117	18	116	22	117	18	116	116	117	18	116	116
25	1	143	29	133	28.58	121	22	128	23	136	24	128	23	136	136	128	23	136	136
32	1 1/4	166	32	147	31.75	137	26	146	23	148	25	146	23	148	148	146	23	148	148
40	1 1/2	175	35	171	34.93	161	31	163	25	169	28	163	25	169	169	163	25	169	169
50	2	203	38	188	38.1	189	38	188	30	196	30	188	30	196	196	188	30	196	196
65	2 1/2	259	61	211	44.45	211	44	227	32	227	32	212	32	212	227	212	32	212	227
80	3	311	64	262	47.63	263	51	278	37	278	37	261	37	261	278	261	37	261	278
100	4	390	84	315	57.15	315	61	330	45	330	45	315	45	315	330	315	45	315	330

Size		Butt Spigot				Socket welding		Weight(kg/unit)											
A	B	DIN		DIN		DIN		Flange				Socket		Thread		Spigot			
		PP,PVDF		PE		PP		PVC		HT,CPVC		PP		PVDF		PP		PVDF	
		L	ℓ	L	ℓ	L	ℓ	PVC	HT,CPVC	PP	PVDF	PVC	HT,CPVC	PVC	PVDF	PP	PVDF		
15	1/2	143	30	210	65	103	17.5	0.4	0.4	0.3	0.5	0.2	0.2	0.2	0.2	0.1	0.2		
20	3/4	152	24	220	65	114	19.0	0.6	0.6	0.4	0.7	0.3	0.3	0.3	0.3	0.2	0.4		
25	1	161	24	237	70	126	21.0	0.9	0.9	0.5	1.0	0.4	0.4	0.4	0.5	0.3	0.5		
32	1 1/4	167	25	258	75	141	23.5	1.2	1.2	0.7	1.3	0.6	0.6	0.6	0.6	0.4	0.7		
40	1 1/2	190	24	292	80	162	26.5	1.8	1.8	1.2	2.0	1.2	1.2	1.2	1.3	0.7	1.3		
50	2	216	28	325	90	185	30.5	2.7	2.7	1.7	3.1	1.7	1.8	1.7	2.0	1.1	1.9		
65	2 1/2	208	23	363	100	204	34.0	4.7	4.7	3.2	5.7	3.5	3.7	3.5	4.1	2.3	4.0		
80	3	301	45	424	105	264	37.0	7.3	7.6	5.0	9.1	6.2	6.8	6.2	7.5	4.3	7.6		
100	4	340	43	478	110	317	41.0	12.5	13.0	8.1	15.5	11.5	12.3	11.5	13.5	7.2	13.3		



Operating Temperature(°C)

PVC 0 ~ 50



ESLON COMPACT BALL VALVE

Feature

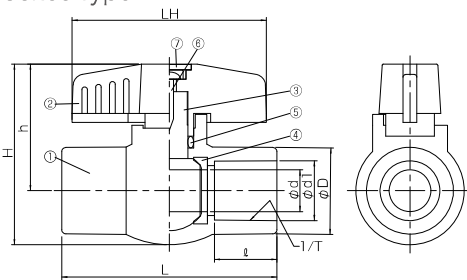
- Compact body and short face to face dimension enable installation even in narrow space.
- Usable even in the condition with vibration or thermal expansion as unified body with connection end.
- Six colors of handle enable easier management of application and fluid classification.

⚠ Important Notes

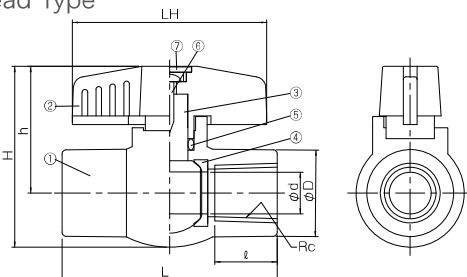
- Gasifying, volatile, or evaporating fluid such as hydrogen peroxide and sodium hypochlorite might rise inner pressure of valve and burst the valve. Please contact us concerning such risk.
- Do not use for the fluid containing slurry, solid, sediment, or crystallized fluid. Or for those kinds of fluid, strainer should be used in upstream.

Figure (TS Socket Type · Thread Type)

- TS Socket Type



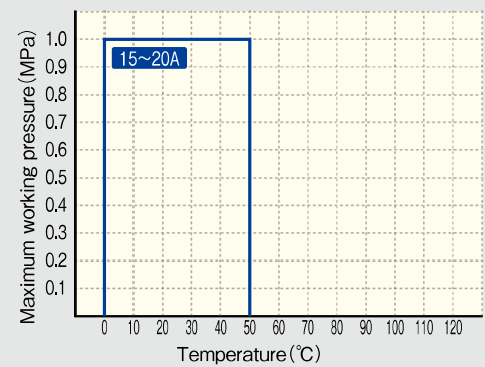
- Thread Type



*13A is different from 15A and 20A.

Maximum Working Pressure -Temperature Rating

Body material : PVC



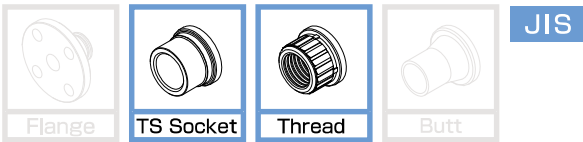
Parts List

No.	Part Name	Q'TY	Material
1	Body	1	PVC
2	Handle	1	ABS
3	Stem	1	CPVC
4	Ball Seat	2	TPO
5	O-Ring	1	● EPDM ● FKM
6	Screw	1	SUS304
7	Cap	2	ABS

Size

Unit : mm

Size		d	D	L	H	h	LH	TS Socket			Thread		Weight(kg/unit)	
A	B							d ₁	1/T	ℓ	Rc	ℓ	TS Socket	Thread
13	3/8	13	25.4	72.5	65	45.5	70	18.3	1/30	18.0	Rc 3/8	15	0.10	0.10
15	1/2	15	31.0	77.5	65	45.5	70	22.3	1/37	22.4	Rc 1/2	18	0.08	0.08
20	3/4	20	37.0	90.0	75	52.0	79	26.3	1/42	25.6	Rc 3/4	18	0.14	0.14



Operating Temperature(°C)

PVC 0 ~ 50



ESLON LOCK BALL VALVE

Feature

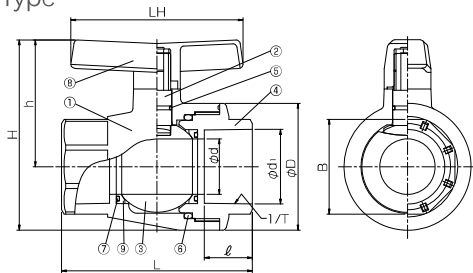
- Usable even in the condition with vibration or thermal expansion as unified body with connection end.
- Six colors of handle enable easier management of application and fluid classification.

⚠ Important Notes

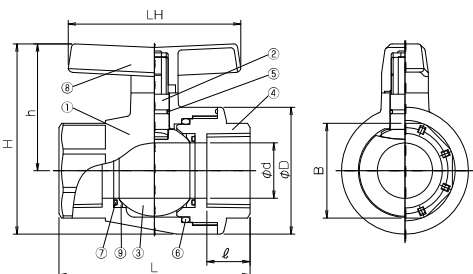
- Gasifying, volatile, or evaporating fluid such as hydrogen peroxide and sodium hypochlorite might rise inner pressure of valve and burst the valve. Please contact us concerning such risk.
- Do not use for the fluid containing slurry, solid, sediment, or crystallized fluid. Or for those kinds of fluid, strainer should be used in upstream.

Figure (TS Socket Type · Thread Type)

● TS Socket Type

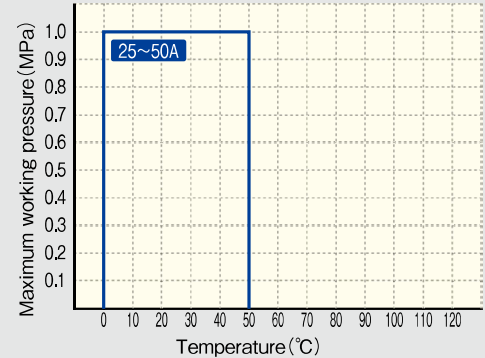


● Thread Type



Maximum Working Pressure -Temperature Rating

Body material : PVC



Parts List

No.	Part Name	QTY	Material
1	Body	1	PVC
2	Stem	1	PVC
3	Ball	1	PVC
4	Body Cap	1	PVC
5	Stem O-Ring	1	● EPDM
6	Body O-Ring	1	● FKM
7	BackUp O-Ring	2	● FKM
8	Handle	1	ABS
9	Ball Seat	2	PTFE

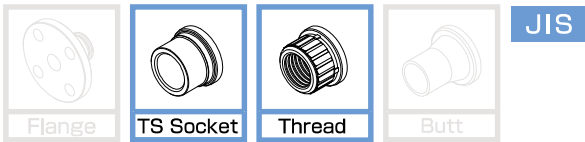
Size

TS Socket · Thread

Unit : mm

Size		d	L	H	h	φ D	LH	B	TS Socket			Thread		Weight(kg/unit)	
A	B								d ₁	1/T	ℓ	Rc	ℓ	TS Socket	Thread
25	1	25	113.0	96	64.0	66.0	95	46	32.3	1/43	29.0	Rc 1	23	0.3	0.3
32	1 1/4	29	114.0	119	82.0	74.0	110	60(54)	38.4	1/37	32.0	Rc 1 1/4	28	0.4	0.4
40	1 1/2	35	130.0	133	91.0	85.0	110	65	48.5	1/38	35.0	Rc 1 1/2	30	0.6	0.6
50	2	45	155.0	154	103.0	103.0	140	77	60.6	1/35	39.0	Rc 2	35	1.0	1.0

* The octagonal part of 32A differs by the Body and Bodycap side. The value of body side is indicated by ().



Operating Temperature(°C)

PVC 0 ~ 50



13, 15A

6A

ESLON MINI BALL VALVE

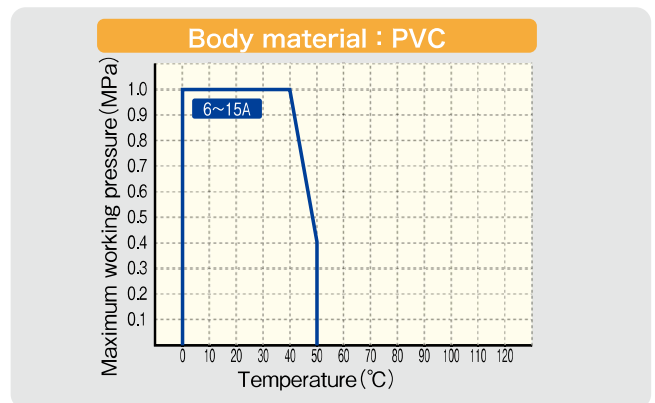
Feature

- Low stem torque and reliable sealing performance.
- Position indicator at handle enable easier flow rate regulation.
- Five types of end connections and their combination of both end connection available.

⚠ Important Notes

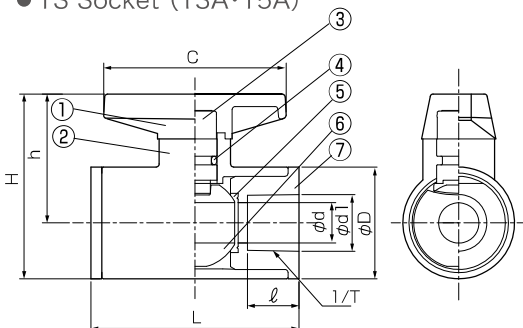
- Gasifying, volatile, or evaporating fluid such as hydrogen peroxide and sodium hypochlorite might rise inner pressure of valve and burst the valve. Please contact us concerning such risk.
- Fluid containing slurry, solid, sediment, or crystallized fluid might disable sealing.

Maximum Working Pressure - Temperature Rating

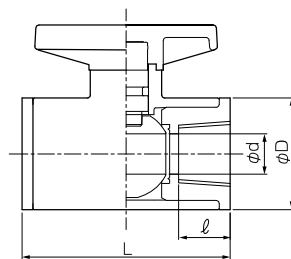


Figure, Parts List, Size (TS Socket Type and Thread Type, 13A · 15A)

● TS Socket (13A·15A)



● Thread (15A)



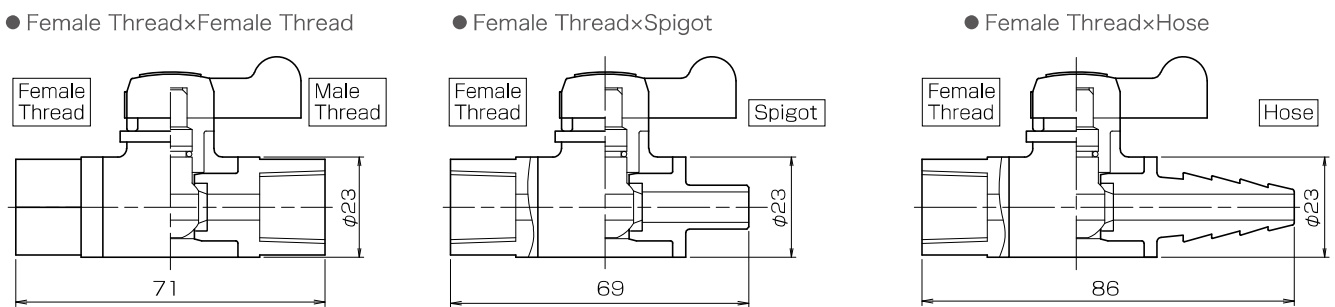
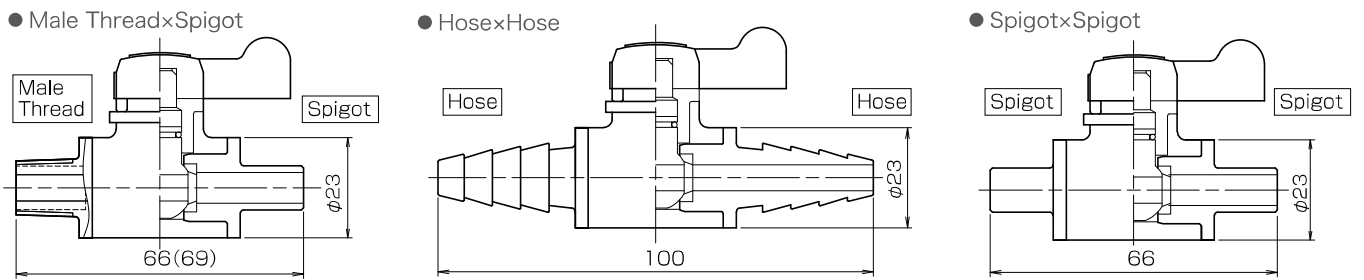
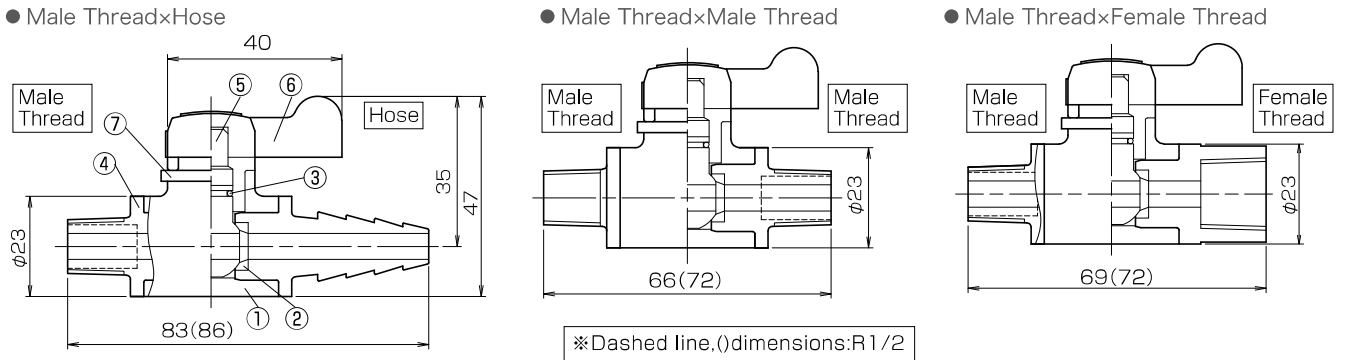
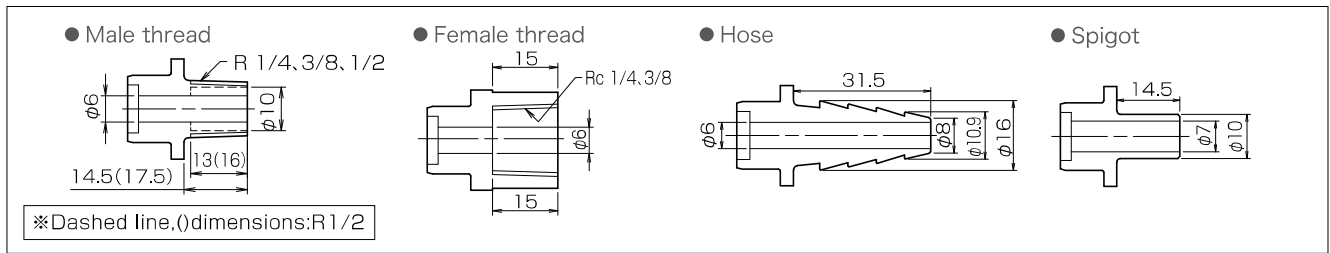
(13A, 15A)

No.	Part Name	Q'TY	Material
1	Handle	1	ABS
2	Body	1	PVC
3	Stem	1	PVC
4	O-Ring	1	● EPDM ● FKM
5	Ball Seat	2	PTFE
6	Ball	1	PVC
7	Socket	2	PVC

Unit : mm

Size		d	L	H	h	D	C	TS Socket				Thread		
A	B							d ₁	1/T	ℓ	Weight (g/unit)	Rc	ℓ	Weight (g/unit)
13	3/8	13	67	60	42	35	60	18.3	1/33	16.5	90	—	—	—
15	1/2	13	67	60	42	35	60	22.3	1/33	16.5	80	Rc1/2	16	90

Figure (6A)

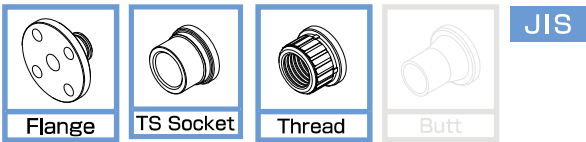


Combination of End Connection, Weight

Size	Part Name	Weight(g/unit)
6A	Male Thread x Male Thread	30
	Male Thread x Female Thread	40
	Male Thread x Hose	40
	Male Thread x Spigot	30
	Female Thread x Female Thread	40
	Female Thread x Hose	40
	Female Thread x Spigot	40
	Hose x Hose	40
	Spigot x Spigot	30

Parts List
(6A)

No.	Part Name	QTY	Material
1	Body	1	PVC
2	Ball Seat	2	● EPDM ● FKM
3	O-ring	1	● EPDM ● FKM
4	Socket	1	PVC
5	Ball	1	PVC
6	Handle	1	ABS
7	Stem Stopper	1	PVC



Operating Temperature(°C)

PVC 0 ~ 50



Flange



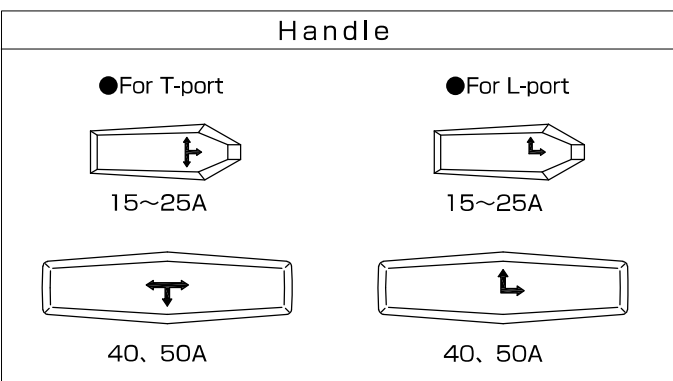
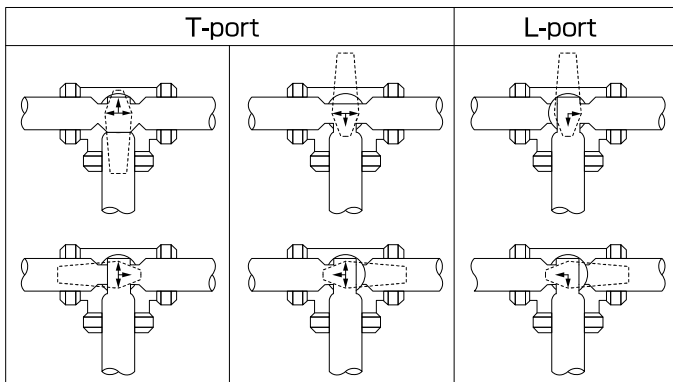
TS Socket·Thread

ESLON 3-WAY BALL VALVE

Feature

- Lock mechanism of ball stopper prevents popping out of the ball when Unit Nut of downstream side is loosened.
- Arrow marks on handle and body ensure flow direction.
- Two patterns of flow directional control available, T-Port and L-Port.

Flow Control Pattern by Handle Position



⚠ Important Notes

- Fluid containing slurry, solid, sediment, or crystallized fluid might disable sealing.

Maximum Working Pressure - Temperature Rating

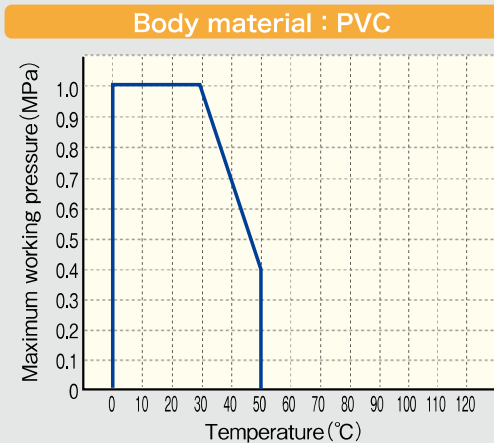
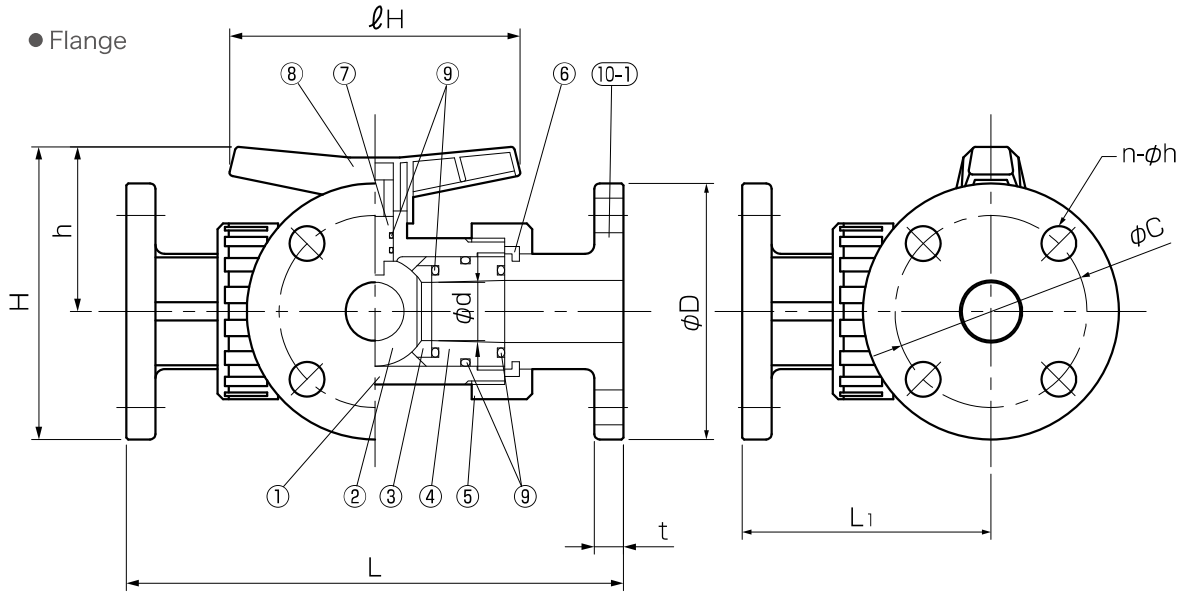


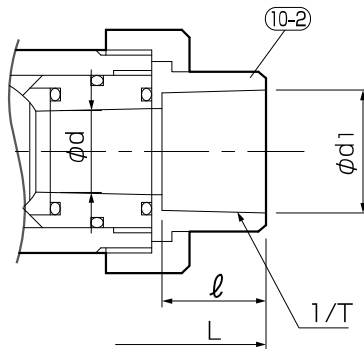
Figure (Flange Type · TS Socket Type · Thread Type)



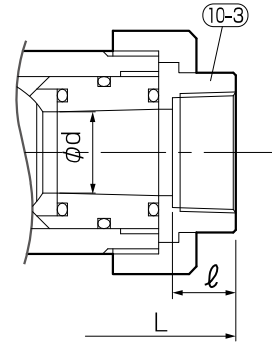
Parts List

No.	Part Name	Q'TY	Material
1	Body	1	PVC
2	Ball	1	PVC
3	Seat	4	PTFE
4	Ball Stopper	2	PVC
5	Union Nut	3	PVC
6	Set Ring	3	PVC
7	Stem	1	PVC
8	Handle	1	PVC
9	O-ring	11	● EPDM ● FKM
10-1	Flange	3	PVC
10-2	TS socket	3	PVC
10-3	Thread	3	PVC

● TS Socket



● Thread



Size

Flange Type

Size		d	L	L ₁	H	h	ℓH	Flange(JIS 10K)				Weight (kg/unit) PVC
A	B							D	C	n-φh	t	
15	1/2	11	163	82	95	48	73	95	70	4-15	14	0.8
20	3/4	16	200	100	102	52	85	100	75	4-15	14	0.9
25	1	20	221	111	126	64	94	125	90	4-19	16	1.5
40	1 1/2	32	272	136	160	90	160	140	105	4-19	18	2.5
50	2	38	306	153	176	98	160	155	120	4-19	20	4.0

TS Socket Type · Thread Type

Size		d	L		L ₁		H	h	ℓH	TS Socket			Thread		Weight(kg/unit)	
A	B		TS	Thread	TS	Thread				d ₁	1/T	ℓ	Size	ℓ	PVC	
												TS	Thread			
15	1/2	11	129	118	65	59	73	48	73	22.3	1/34	24	Rc 1/2	13	0.3	0.3
20	3/4	16	151	134	76	67	81	52	85	26.3	1/34	28	Rc 3/4	15	0.4	0.4
25	1	20	175	156	88	78	98	64	94	32.4	1/34	32	Rc 1	17	0.6	0.6
40	1 1/2	32	232	203	116	102	138	90	160	48.5	1/37	41	Rc 1 1/2	19	1.5	1.5
50	2	38	260	225	130	113	154	98	160	60.6	1/37	47	Rc 2	23	2.3	2.2